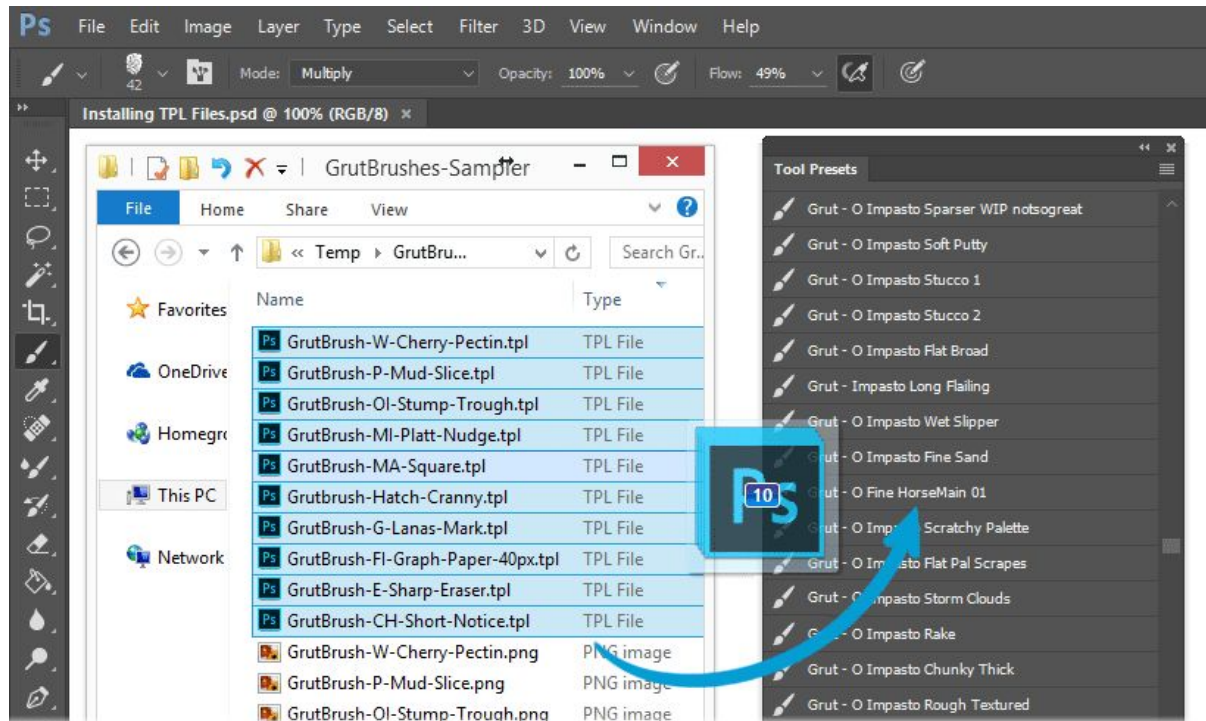
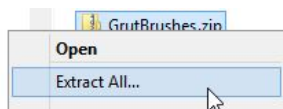


# How to Install GrutBrushes TPL brushes

## ➤ Method A Drag and Drop



1. Extract/Unzip the .zip file



2. Select all the GrutBrushes TPL files (**only** the TPL files) that you want to install and drag them into the Tool Presets Panel in Photoshop (**not** into a PSD document!)
3. They will appear in the Tool Presets panel (*Window > Tool Presets*) Not in the Brush panel.

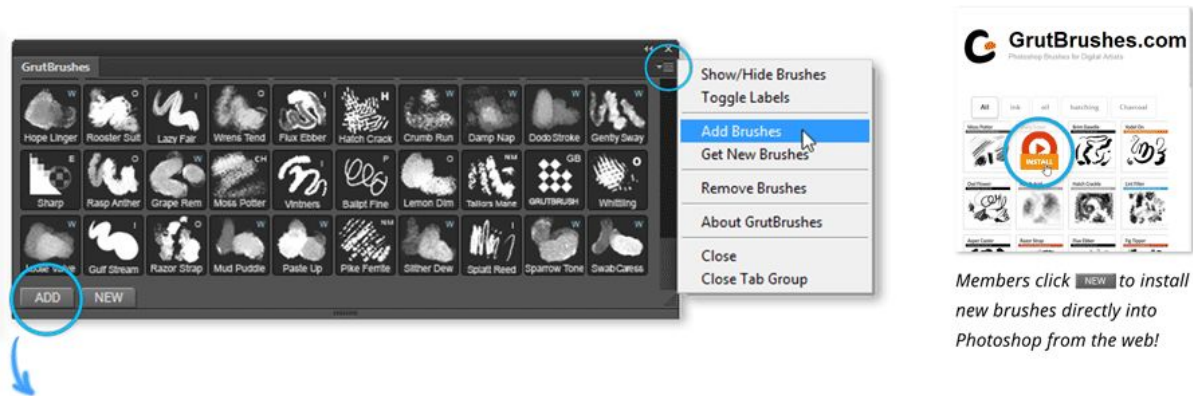
**That's it, start Painting!**

### Don't See your GrutBrushes?

- You will not find them in the brushes panel! They are tool presets (tpl files) not abr files
- Make sure that 'Current Tool Only' is un-checked at the bottom left of the Tool Presets panel.

## ➤ Method B - Using the Free GrutBrushes Plugin Panel

(Photoshop CC 2014/15 **only**) Available at <http://grutbrushes.com/plugin>



1. Click on the 'Add' button to add brushes from your hard drive
2. Select the GrutBrushes you want on your hard drive. They will then appear in the GrutBrushes panel. **That's it, you're done...start Painting!**

Want more brushes?

Get every single Art Brush plus a free membership at <http://GrutBrushes.com/artbrushes>



Visit [grutbrushes.com/help](http://grutbrushes.com/help) for help if you need it